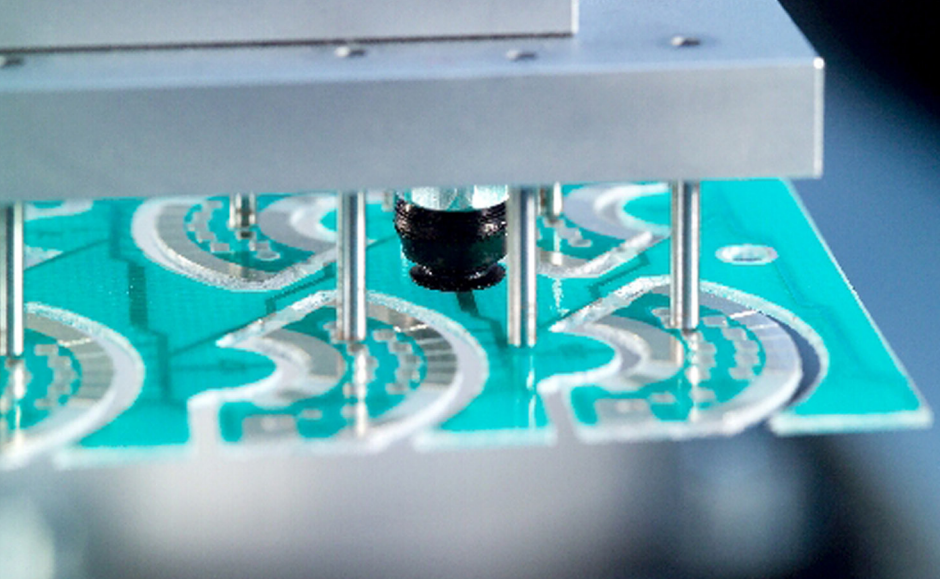


baumann  
**de | box**

THE AUTOMATION FOR  
DEPANELING CIRCUIT  
BOARDS



## baumann de | box

Automated depaneling in connection with assembly – economical, careful and intelligent.

The characteristic features of the baumann delbox reside in the coupling of the separation method with the robot-aided loading/unloading technique. This allows processing (e.g. check, assembly, palletizing) of the single circuit board in one cell.

Two separating knives, which penetrate the basic material simultaneously from below and above, do not transfer the resulting material displacement to the circuit board, but only to the skeleton, and thus ensure a careful, low-stress separation.

A robot takes over the panel feed with a flexible grip system. These may either be fed directly via transport conveyors or magazines and trays. The robot may provide the single

circuit boards for further treatments after separation. The compact design enables to integrate the cell into an assembly line seamlessly.

This variability enables the inline use as well as the rational automation of small lot sizes.

Die baumann delbox may be used as:

- End cell in the circuit board equipment area
- Start cell in the final assembly area
- Feed and assembly cell in the final assembly area

### Product characteristics

#### Standard cell size

- WDH approx. 1450 mm x 1450 mm x 1780 mm

#### Power rating

- 400V 50Hz
- 5.2 kW
- 6 bar

#### User interface

- TFT-TouchScreen mit baumann rolbox Visualisierung

#### Switch cabinet

- integrated in cell

#### Accessibility

- lift and swivel door

#### Depaneller

- Max. panel size 240 x 330 mm  
optional max. 290 x 450 mm
- Pressure max. 74 kN
- Lift ca. 25 mm  
optional approx. 30 mm

#### Cycle times

- Pick & place panel or circuit board approx. 2 Sec.
- Panel separation time (complete) approx. 5 Sec.

**Baumann GmbH Headquarters**  
Oskar-von-Miller-Str. 7  
92224 Amberg, Germany  
Tel.: (+49) 9621 6754-0  
Fax: (+49) 9621 6754-922  
info@baumann-automation.com  
www.baumann-automation.com

**Baumann Automation (Shanghai) Co., Ltd.**  
Unit 8501, Building No. 8  
No. 550, Ju Men Road, Huangpu District  
200023 Shanghai, China  
Tel.: (+86) 21 3331 5500  
china@baumann-automation.com  
www.baumann-automation.com

**S.C. Baumann Automation S.R.L.**  
Str. Traian Vuia Nr. 141C  
400396 Cluj-Napoca, Romania  
Tel.: (+40) 264 480 320  
office.romania@baumann-automation.com  
www.baumann-automation.com

**Vectralis-Baumann Automation**  
Industria Naviera 168  
45069 Zapopan, Jal., Mexico  
Tel.: (+52) 33 31-65-20-00  
info@vectralis.com  
www.vectralis.com